



A



B



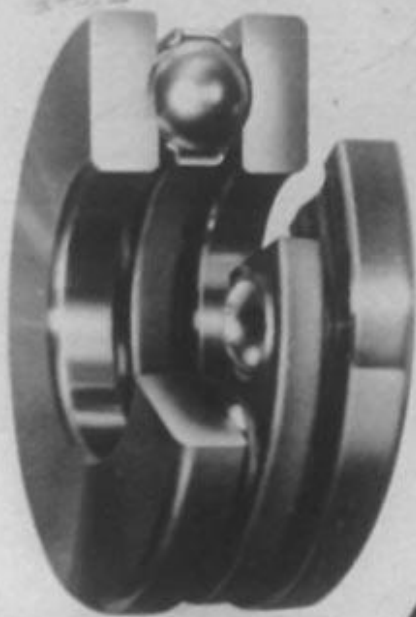
C



D



E



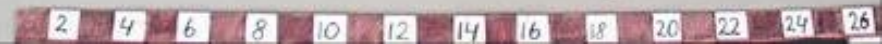
F

32

Hur ett
SKF KULLAGER
kommer till



GIM:8657





GhmPK:2811

Första kullagerfabriken vid SKF byggd 1907.



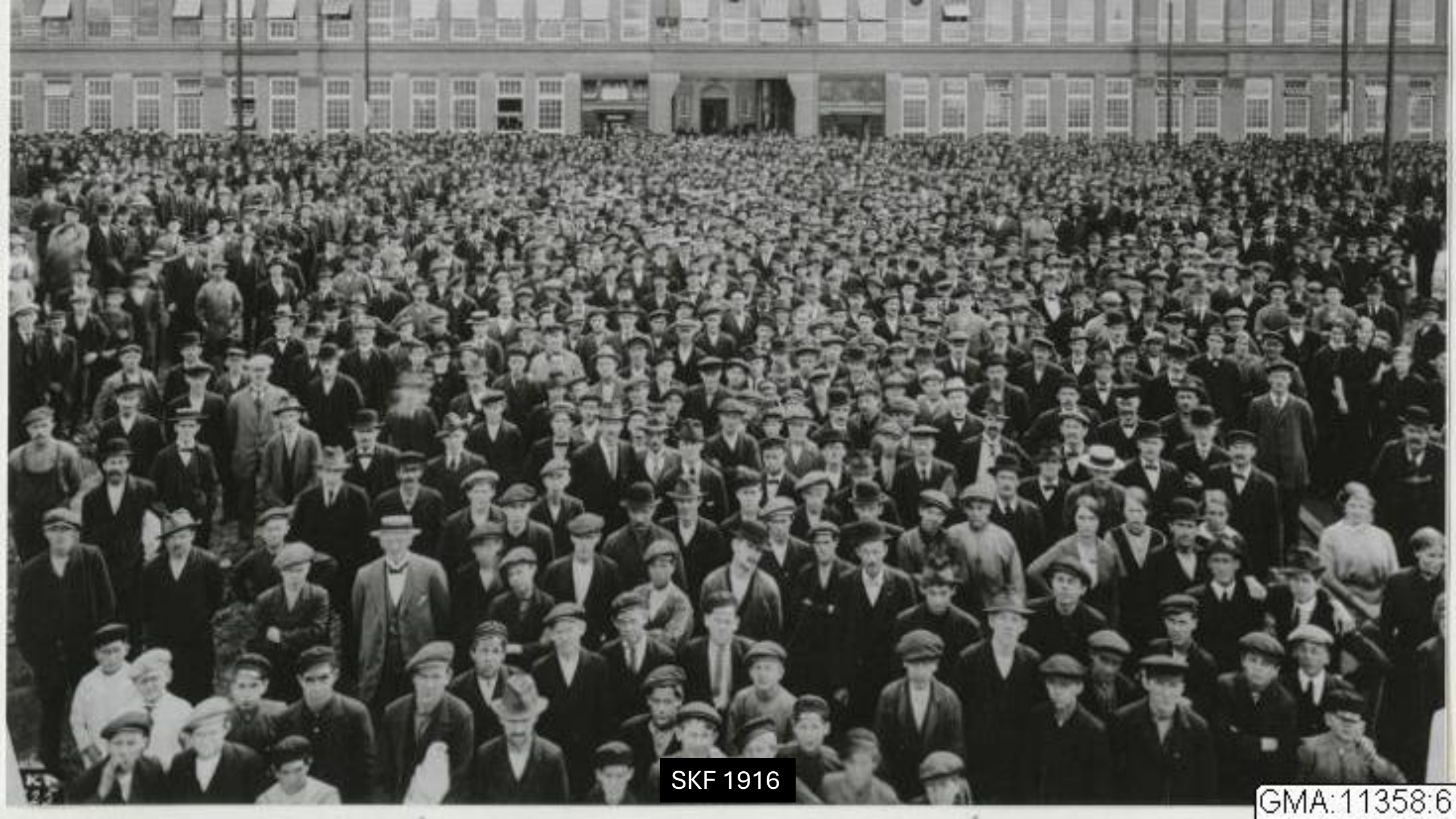




Arbetarbostäder SKF 1914



Verkmästare och ingenjörer vid SKF 1915



SKF 1916

GMA:11358:6



SKF - 1914 3000 anställda - 1918 12 000 anställda



THE HESS-BRIGHT MFG. CO.

Rt. C. MI. C. 1925

HESS-BRIGHT BALL BEARINGS

are a quality product exclusively — the first cost is high.

It is but natural, then, that the manufacturers of one of America's finest automobiles, who insist upon the best, should prefer to use them.

THE HESS-BRIGHT MANUFACTURING CO.
PHILADELPHIA, PA.

HESS-BRIGHT'S CONRAD PATENTS ARE THOROUGHLY ADJUDICATED



SKFs arbetarbostäder 1922



Maskinhallen 1923 - SKF



SKFs monter på Kullagerterrassen i Exportutställningen 1923



34.

SKF Jubileumsutställningen 1923



GAMLESTADENS



FABRIKERS

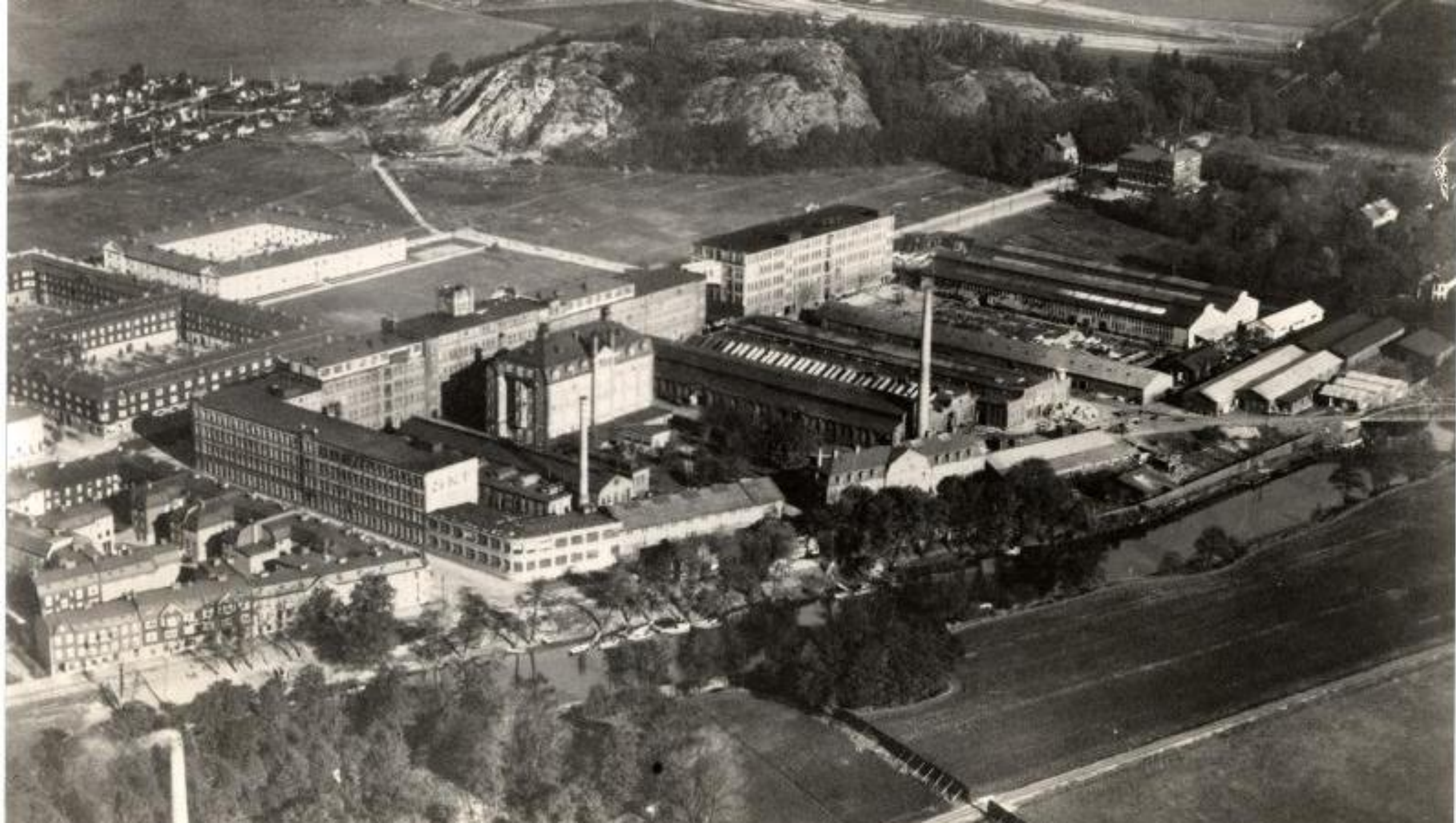


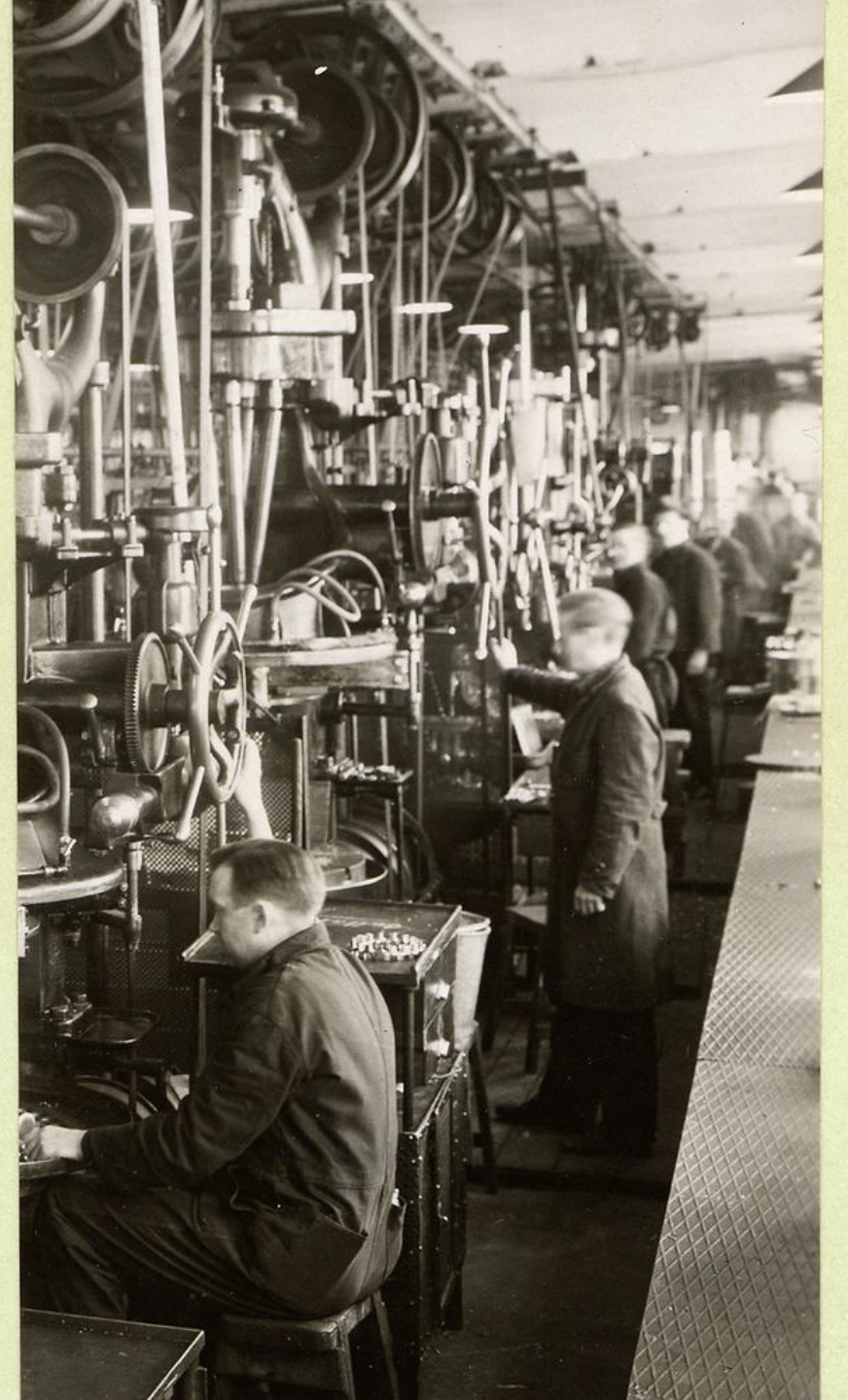
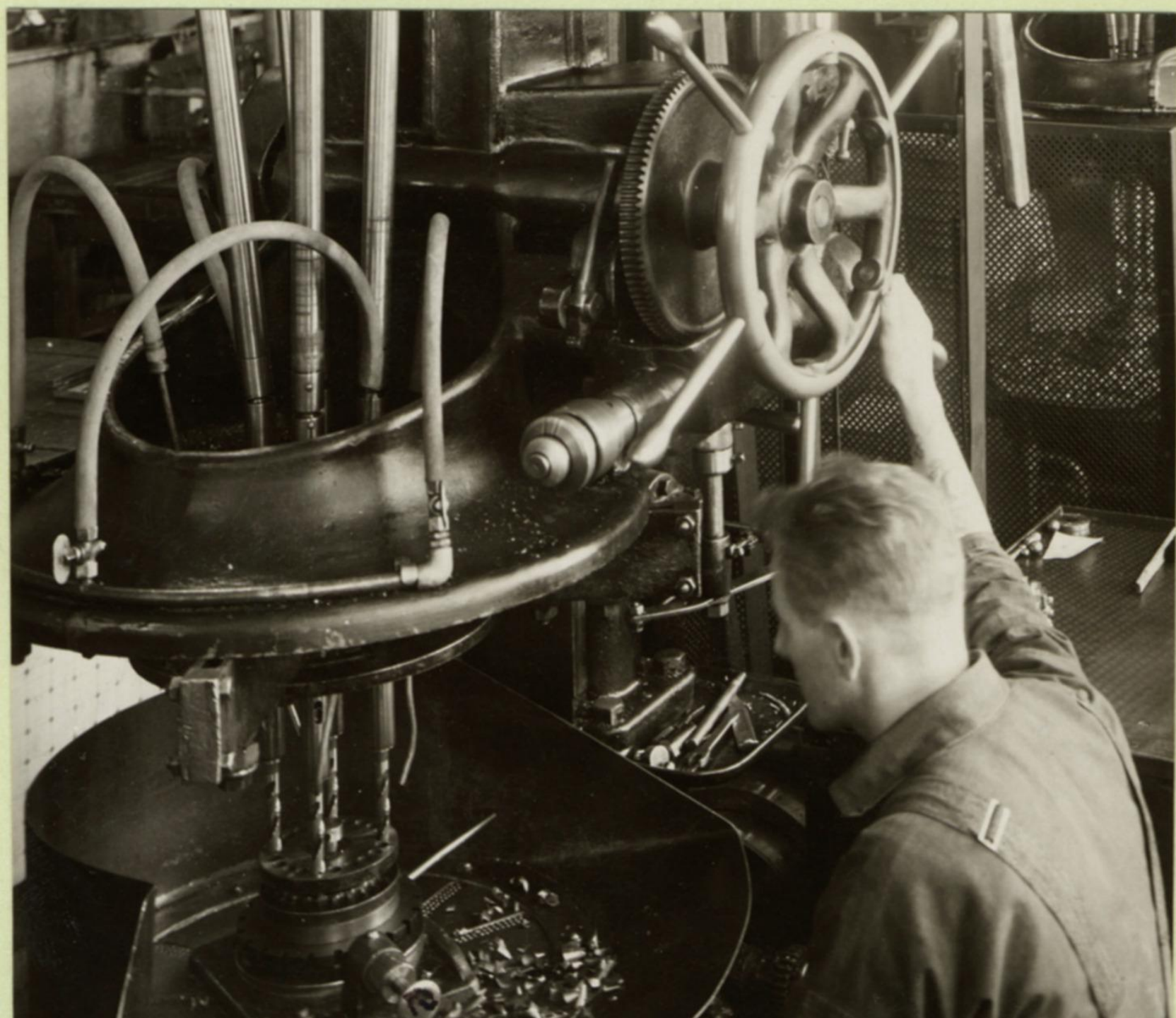
AKTIEBOLAG



SKF 1930-tal













J



AUTOMOBILEN

OCH

VOLVO



MÄNNISKA

SVENSKA RÖDA STJÄRNAN
SVEVINGO KÅSTEN
D. JURAMBULANS

Carroll Hagg
BRÖD&S

ALFR. SANDERSONS
MASKINFABRIK
LINKÖPING

SKF

SKF

Svenska Mässan 1935